

Digitha

Digital entry panels

The Thangram range is completed by Digitha, a stainless steel entry panel that is particularly sturdy and highly functional. With Bpt's focus on making the best possible use of internal and external space, as well as the numerous features made possible by the digital pushbutton panel, Digitha offers unparalleled performance and ultra-compact design, and the sophisticated XiP digital control system is the ideal solution for residential systems.

Attractive and elegant, Digitha is pleasing to the senses, with a dual finish – brushed and matt – that will delight both the eye and the touch.

Digitha: the new generation of entry panels.

- Elegance and discretion
- Superb video quality, day and night
- Vandal resistant

VERSIONS



Audio entry panel



Video entry panel

COMPATIBLE SYSTEM

XiP

INTERNET PROTOCOL



bpt

Components range and Accessories

entry panels



Audio entry panel



Video entry panel

Accessories for installation



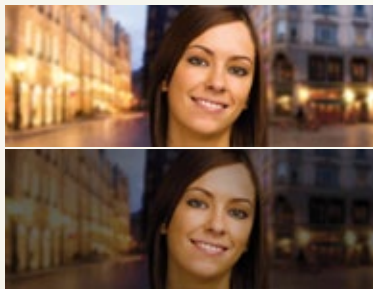
Embedding box



Frame with rain cover

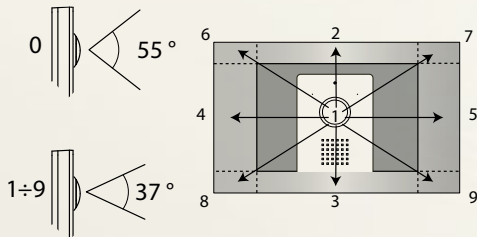


Wall-mount support with rain cover



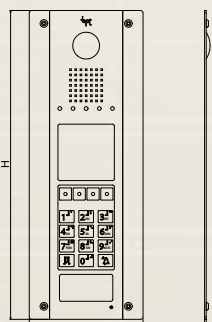
perfect colour in any condition

The sophisticated light guide system, developed jointly with the Plast Optica Research Centre (a division of FIAT's research centre), guarantees perfect night-time illumination. The latest digital sensors, together with sophisticated image-processing algorithms, guarantee superlative video quality in any ambient conditions.



Digital camera angle adjustment

Thangram features the "wide eye" system (angle of lens aperture: 55°), which gives an extra-wide field of vision (for example, from a distance of 50 cm from the entry panel, the camera can capture an image 86 cm in width and 57 cm in height). At the moment of installation of the entry panel, the angle of aperture can be reduced to as little as 37° by digitally adjusting the zoom, and the camera can be oriented in the desired direction.



dimensions

	L (mm)	W (mm)	D (mm)
Wall-mounted	145	383	42
Recessed	140	380	2